

Anti-*Photobacterium damsela*e monoclonal antibody

Product reference: CETGA-105

PRODUCT SPECIFIC INFORMATION

Product details

Size	200 µg
Species Reactivity	<i>Photobacterium damsela</i> e
Host	Mouse (SWISS)
Class	Monoclonal antibody
Isotype	IgG2a
Form	Lyophilised
Purification	Affinity chromatography

Description

The monoclonal antibody (Mab) against *Photobacterium damsela*e is species-specific. The specificity of the Mab has been tested against a range of fish bacterial pathogens including different *P. damsela*e subsp. The Mab is of an IgG2a isotype.

Application

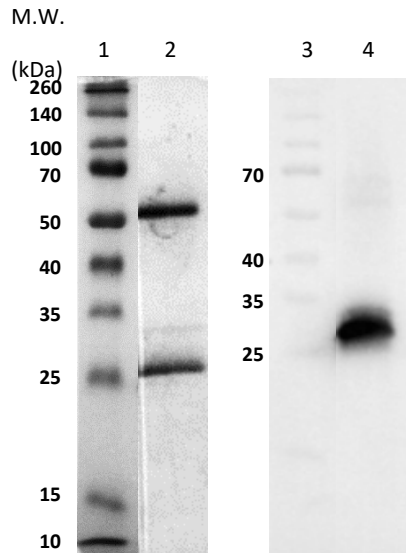
The Mab was tested in ELISA, WB and immunocytochemistry. The optimal working dilution must be determined empirically for each procedure. Recommended range of use for WB is 0.1-5 µg/mL. This product is for research use only.

Vial contents and storage

Each vial contains 200 µg of lyophilised purified immunoglobulin in phosphate buffered saline (PBS) with stabilizers, 0.25 M sucrose.

It is recommended to reconstitute by adding 200 µL of pure water to get 1.0 mg/mL stock dilution and store in aliquots at 4-8 °C or -20°C. Avoid repeated freezing/thawing cycles.

Product images for CETGA-105 Mab



Lanes 1 and 3: Molecular weight markers. Lane 2: SDS-PAGE of the protein A-purified Mab. Coomassie staining. Lane 4: Western blot (WB). *Photobacterium damselae* reduced lysate transferred to a PVDF membrane was detected using CETGA-105 Mab (0.1 µg/mL) and anti-mouse IgG specific antibody as secondary antibody.